

Human Rights Eco Policy Tour

- Date: Oct. 5 (Thur), 2023
 - Time: 9 a.m. - 3 p.m.
 - Course: Hotel > Dong-gu Humanities Learning Center > Gwangju Pureungil Park (walking) > Bitgoeul Citizen's Sunlight Power Plant > Kimdaejung Convention Center (by bus)
- ※ This tour is only available to the Indonesian delegates.

Dong-gu Humanities Learning Center & Gwangju Pureungil Park

The first destination of the Human Rights Eco Policy Tour is the Dong-gu Humanities Learning Center. The building was constructed as a modern-style house, in 1954 and contains the architectural styles of Korea, Japan, and the West. Its surrounding areas used to suffer from severe traffic jam, therefore, the district office of Dong-gu intended to purchase the property and turn it into public parking lots. However, at the quests of residents, the Dong-gu eventually re-developed it into a cultural space. We plan to go on a walking tour from the Learning Center after listening to the introduction of the Gwangju Pureungil Park.

The Gwangju Pureungil Park is an urban park with trails of trees that pass through the central part of Gwangju. In the past, it was used as a train track connecting the Southeast (Gyeongsang-do province) and the Southwest (Jeolla-do province) of the nation. After the track closed, flowers and trees were planted around the abandoned track to create a green road. As the park creation work was participated by citizens from the beginning, visitors will have a chance to fully enjoy the autumn of a representative green space that connects the city and forest, people and people in Gwangju.

[\(Click to visit ICLEI's case study on the Gwangju Pureungil Park\)](#)

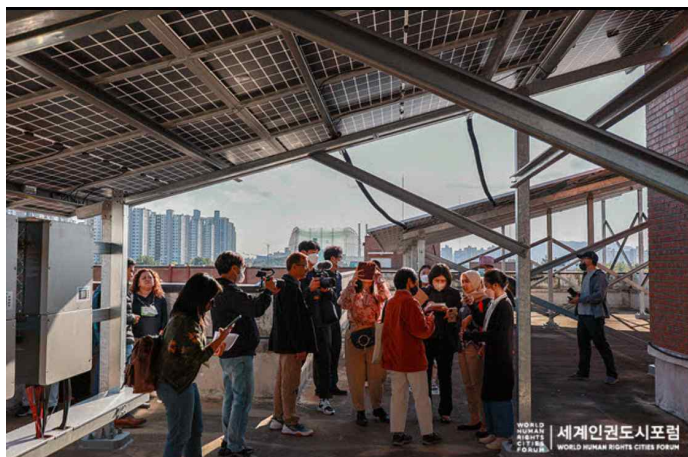


세계인권도시포럼 WORLD HUMAN RIGHTS CITIES FORUM

WWW.WHRCF.ORG | WHRCF@GIC.OR.KR | +82.62.226.2734

Bitgoeul Citizen's Sunlight Power Plant

The Bitgoeul Citizen's Sunlight Power Plant is a power plant established by the Bitgoeul Citizen Sunlight Development Social Cooperative. What makes the power plant special, is that it was launched as a public-private corporative power plant built in collaboration among Gwangju citizens (Cooperative), public organization (Gwangju Metropolitan Corporation), and Gwangju Techno Park. The Social Cooperative was launched in July 2020 aiming at responding to climate crisis in collaboration with Gwangju citizens and promoting energy independence of Gwangju City. The Sunlight Power Plant has expanded its power supply starting from an apartment constructed by the Gwangju Metropolitan City Corporation to Gwangju Electronic Technical High School, parking lots of Jingok Industrial Complex, and sports facilities. During the tour, visitors will visit one of them and take a look at the process in which citizens directly carry out a policy of Gwangju.



세계인권도시포럼 WORLD HUMAN RIGHTS CITIES FORUM

WWW.WHRCF.ORG | WHRCF@GIC.OR.KR | +82.62.226.2734